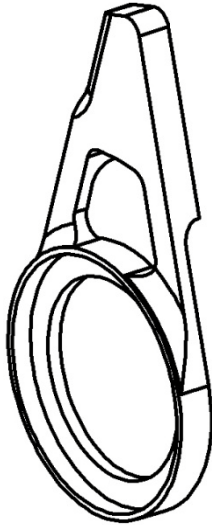




Dirt 3 Chain Catcher Installation Instructions (K13-201)



K13-201 DIRT 3

Description:

The K-Edge Dirt Chain Catcher series is designed to eliminate chain drop on the lowest chainring due to hard shifts, cross-chain shifting and or rough terrain while riding.

Compatibility:

The K-Edge Dirt 3 series can be used with triple MTB cranksets compatible with an 'E-Type' or 'Bottom Bracket Mount' front derailleur utilizing external bottom bracket cups or NON-GXP bottom brackets. This device cannot be used in conjunction with an 'E-Type' front derailleur as it is mounted in the same location.

Warnings:

All K-Edge products are to be installed by a professional bike mechanic.

These instructions are generalized to accommodate a wide ranges of setups for a bike. If your setup does not match what is being described, take extra care in the process of your setup and contact K-Edge Support if you have any questions.

Improper installation of any K-Edge product or use outside of its design intentions could lead not only to damaging the bike but could also cause personal injury to the rider.

Parts Included:

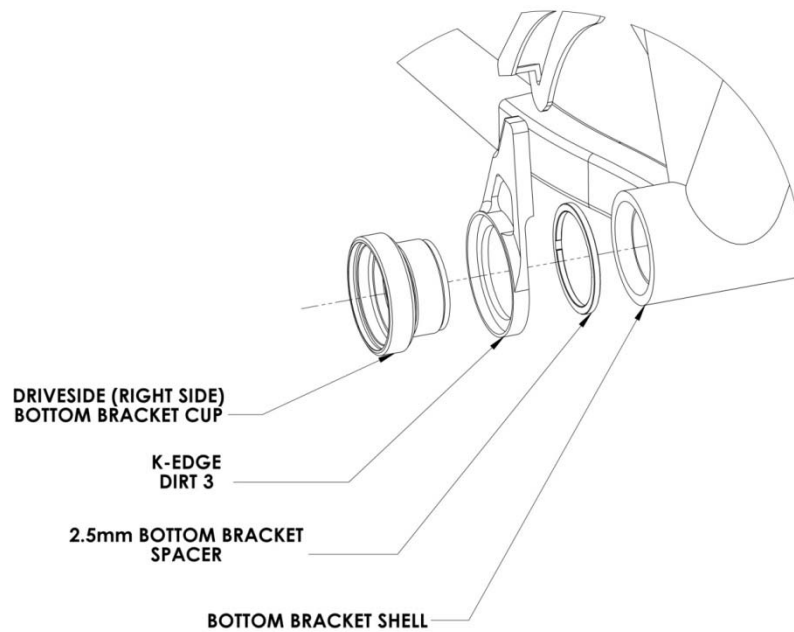
- K13-201:
 - ✓ 1x Dirt 3 Chain Catcher

Tools/Items Required:

- ✓ Manufacturer's Instructions with torque specs for Crankset and Bottom Bracket
- ✓ Bottom Bracket Tool
- ✓ Torque Wrench

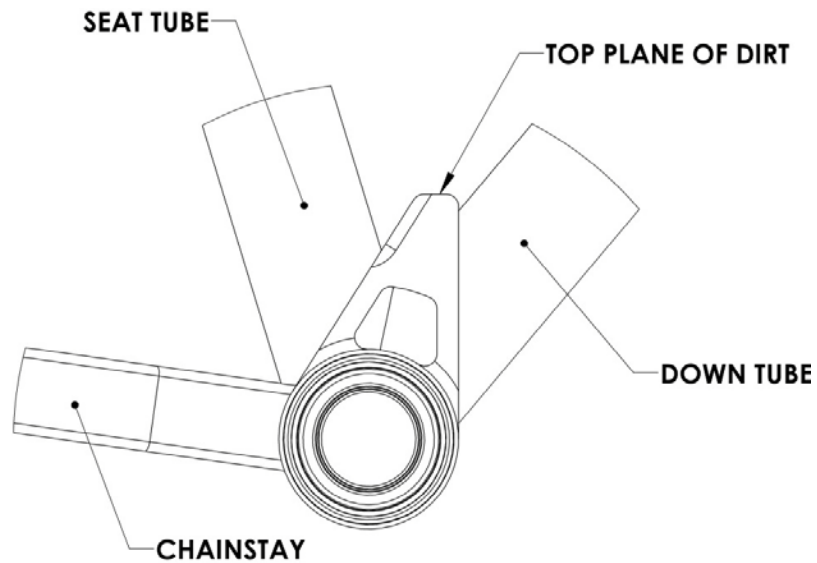
Installation Steps:

1. Remove crankset per manufacturer's recommendations.
2. Remove driveside (right side) bottom bracket cup.
3. Replace 2.5mm spacer (normally reserved for an 'E-Type' front derailleur) with the Dirt 3. Install components in accordance to the image below:



4. Reinstall driveside (right side) bottom bracket cup and hand-tighten only.

5. Position the Dirt 3 angle either halfway between down-tube and seat-tube of frame OR to where the top plane of the pad is parallel to the ground when the bike is on its wheels. See image below:



6. Check to ensure clearance between front derailleur cage and Dirt 3 and adjust accordingly.
7. Torque the driveside (right side) bottom bracket cup per manufacturer's recommendations while maintaining the angle of the Dirt 3.
8. Adjust position as close as possible (without touching/rubbing) to the chain while on the smallest chainring and largest cog, the default position for the Dirt 3.
9. Check that all components are secure and ride.

Troubleshooting:

- Pad does not get close enough to chain.
 - Check that the secondary 2.5mm spacers (for 68mm BB Shells only) is placed between the Dirt 3 and BB shell.
 - Check to ensure that the 2.5mm spacer (normally reserved for an 'E-Type' front derailleur) is not installed with the Dirt 3.
- Pad rubs excessively with chain and there are no spacers installed.
 - Check to see if your crankset is compatible with the Dirt 3.
 - Check the alignment of the Dirt 3 and ensure it is not bent outward towards the chainrings.
- There is a clicking noise and/or my front shifting is not operating normally.
 - Check for clearance between the Dirt 3 and the front derailleur cage and adjust accordingly.
 - Check to ensure that the 2.5mm spacer (normally reserved for an 'E-Type' front derailleur) is not installed with the Dirt 3.
 - Check that the installation of the crankset is in accordance to the manufacturer's recommendations.
- Chain still falls off to the inside while I ride.
 - Check that the pad is positioned as close as possible (without touching/rubbing) to the chain and adjust accordingly.
 - Check the alignment of the Dirt 3 and ensure it is not bent inward towards the frame.
 - Check position of the Dirt 3, the angle can be either halfway between down-tube and seat-tube of frame OR to where the top plane of the pad is parallel to the ground when the bike is on its wheels.
- The Dirt 3 moved/rotated when it was guiding the chain onto the small chainring.
 - Check that the driveside (right side) cup was installed properly to the manufacturer's recommendations - tighten to the upper end of the torque specification range.
 - Check that all components are properly installed and accounted for - a missing/inappropriate spacer can cause a lack of friction within the Dirt 3 and the frame.
 - Check that there is no grease between the Dirt 3 and the BB Cup and the BB shell/2.5mm spacer.

Support/Contact:

If problem(s) still persist after troubleshooting, please contact K-Edge Support for further assistance at info@K-Edge.com immediately. Please be sure to include your full name, phone number, K-Edge product purchased, brand and model of bike, crankset with ring sizes, front derailleur, cassette size (if applicable), rear derailleur (if applicable) and a brief description of your problem.