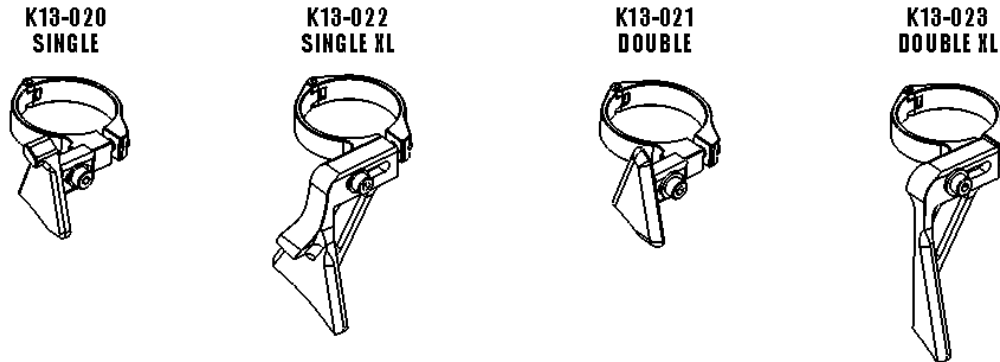




Cycle Cross Chain Catcher Installation Instructions (K13-020-31.8 & 34.9, K13-021-31.8 & 34.9, K13-022-31.8 & 34.9, K13-023-31.8 & 34.9)



Description:

The K-Edge Cross Chain Catcher series is designed to eliminate chain drop on the lowest chainring due to hard shifts, cross-chain shifting and or rough terrain while riding. In addition, chain drop on the single chainring cycle cross due to rough terrain. Furthermore, the Chain Catcher Pad itself is designed to allow for 'bottom' chain derailment without chain drop when back pedaling is necessary for foot adjustment and will re-align the chain when forward pedaling is resumed.

Compatibility:

K13-020 and K13-021 Cross catchers are compatible with framesets that allow for a 'low' mounting position of our clamp (Minimum of 53.2mm from the bottom of the cross clamp to the center axis of the crank spindle is required for a 32T chainring).

K13-022 and K13-023 Cross XL chain catchers are compatible with carbon fiber frames that have a 'web' or large 'gusset' between the down tube and the seat tube of the frame. This 'web' prevents our original cross catchers (020 and 021) from mounting low enough to be effective.

Warnings:

All K-Edge products are to be installed by a professional bike mechanic.

These instructions are generalized to accommodate a wide range of setups for a bike. If your setup does not match what is being described, take extra care in the process of your setup and contact K-Edge Support if you have any questions.

Improper installation of any K-Edge product or use outside of its design intentions could lead not only to damaging the bike but could also cause personal injury to the rider.

Parts Included:

- ✓ 1x Cross Chain Catcher Pad (020, 021, 022, or 023)
- ✓ 1x M4 x 8mm socket head stainless steel bolt
- ✓ 1x M4 Flat washer
- ✓ 1x Clamp 020 & 022 (31.8mm or 34.9mm diameter)

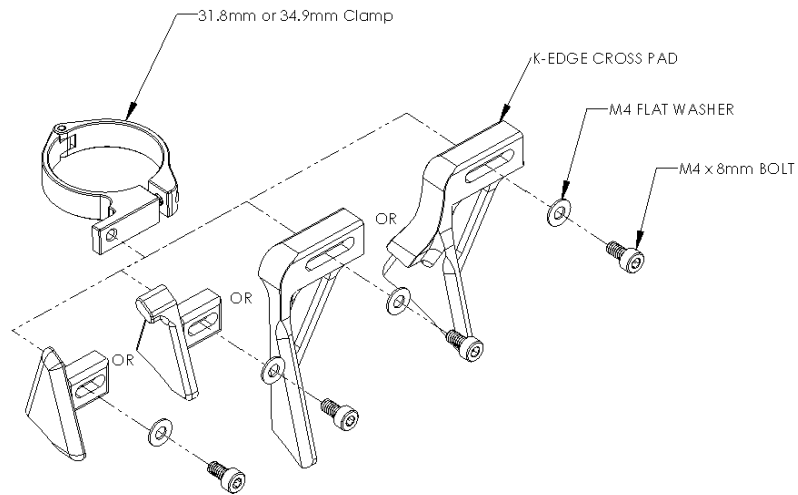
Tools/Items Required:

- ✓ Metric Allen Set (3mm for mounting bolts)
- ✓ Torque wrench (Minimum 2 N-m)

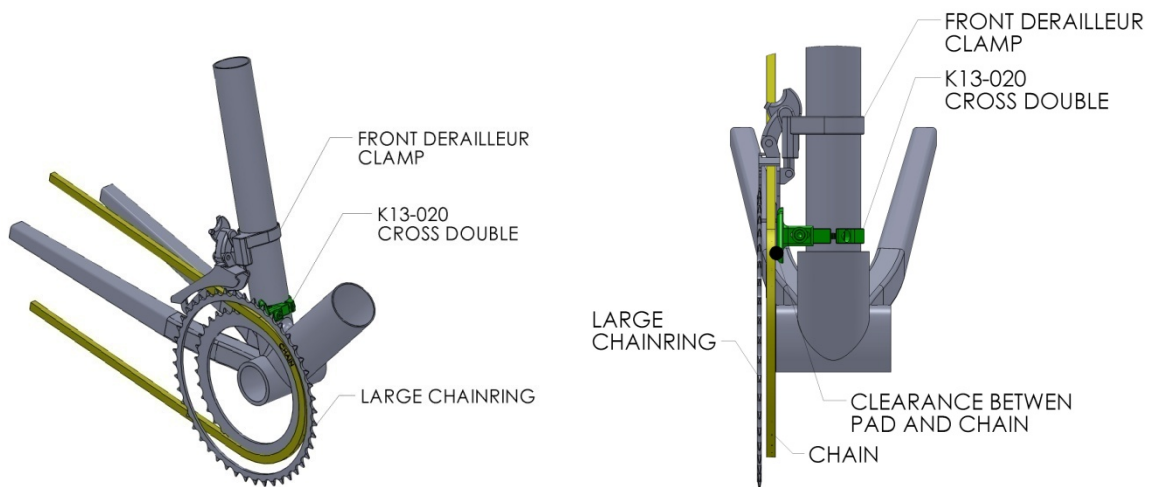
Installation Steps:

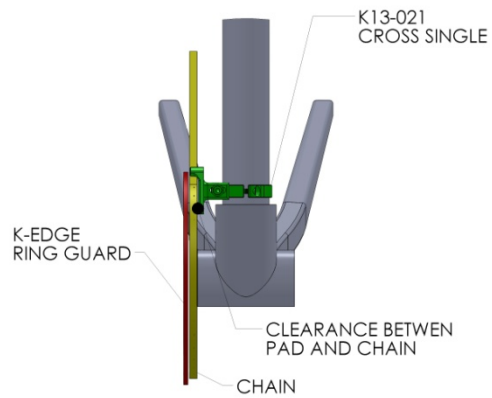
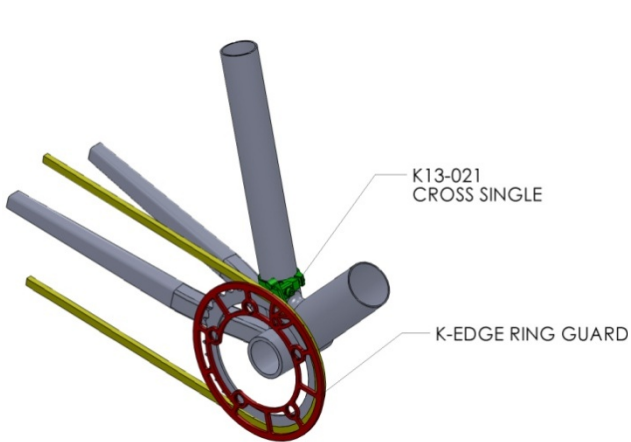
(Installation for Double crank set's)

1. Place K-Edge Clamp below front derailleur clamp and lightly tighten the clamp bolt.
2. Slide the chain catcher pad onto the clamp and lightly tighten. See image below:

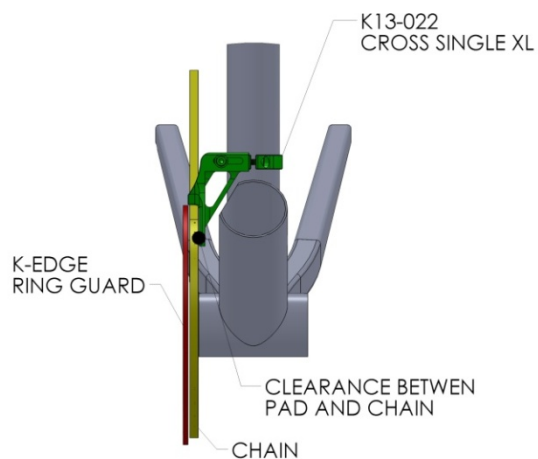
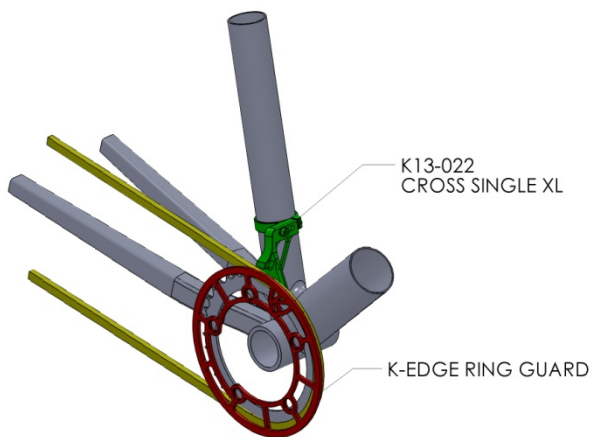


3. Center the clamp on the seat tube and check for proper clearance of chain catcher pad from the chain and chainring. (XL pads are long enough to make contact with the chainring bolts if not given the proper distance between the pad and the chain.) The bottom of the pad should sit just below the chain links and should have approximately 0.5mm clearance between chain catcher pad and chain by sliding the pad towards the chain. See images below for reference:

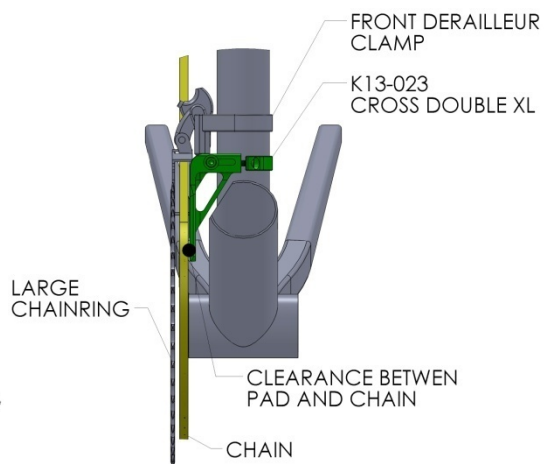
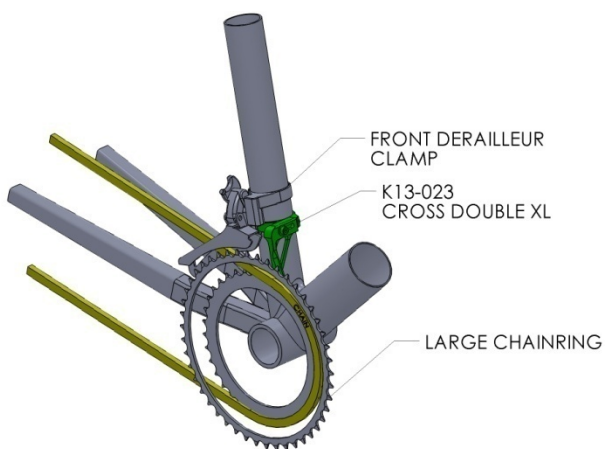




FRONT VIEW



FRONT VIEW

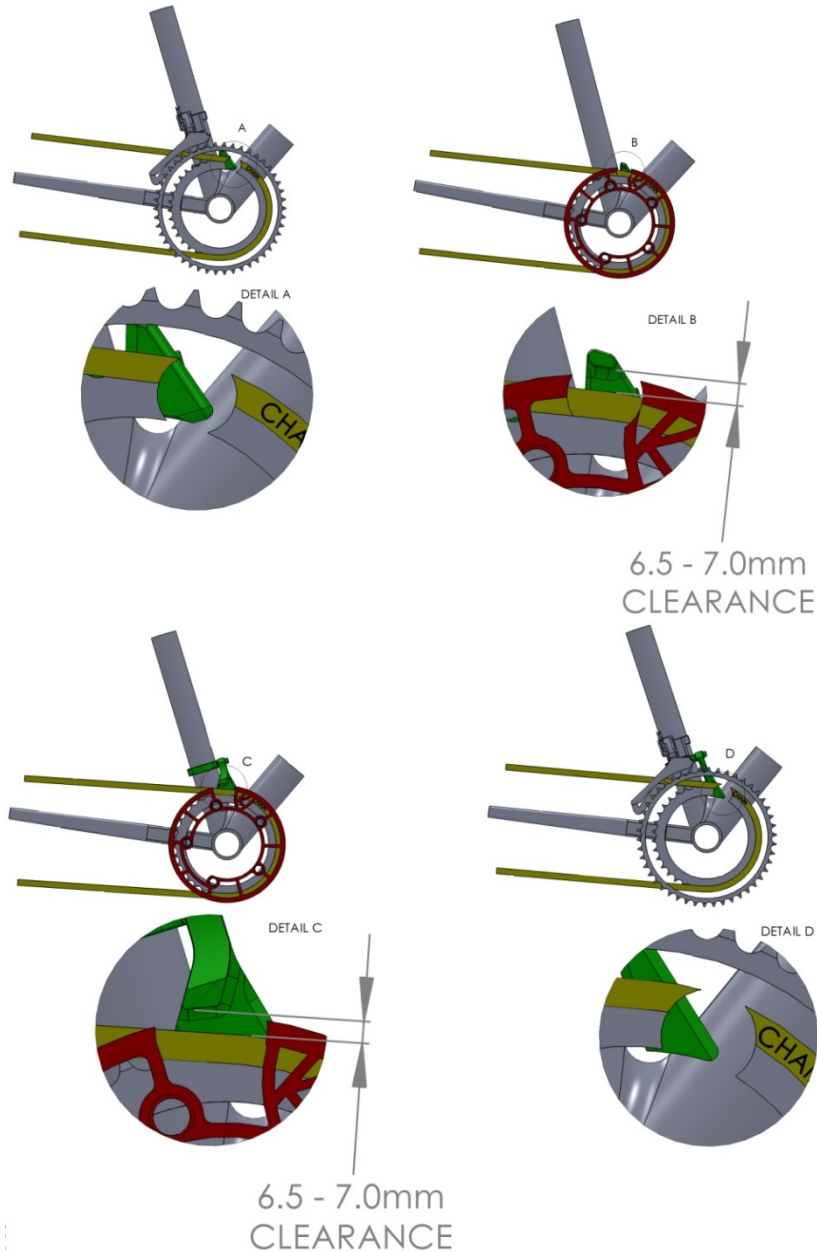


FRONT VIEW

4. Using a 3mm Allen key, tighten the clamp bolt. Do not exceed 2 N-m.
5. Using same 3mm Allen key, tighten chain catcher pad. Tighten to 2 to 3 N-m.

(Installation for single ring pads is the same as above; including next set of instructions for the tab on the single ring pad)

1. Adjust the clamp to position the tab on the single ring pad to sit approximately 6.5mm-7mm above the chain links, depending on the chain manufacturer. Single ring pad's are designed to allow 'bottom' chain derailment when back pedaling is necessary for foot adjustments and will re-engage the chain when returned to a forward rotation.



2. Follow the same tightening instructions as stated in previous installation instructions to complete the installation.
3. De-rail the chain off of the bottom of the chainring and back pedal to check for proper height of the tab over the chain links. Proper installation will guide the chain off the chainrings, allowing the chainring to 'back-pedal' and will 'reengage' when forward motion is resumed.

Troubleshooting:

- Chain drops even though chain catcher pad is installed.
 - Check the chain catcher pad for proper adjustment.
 - Check the pad of the chain catcher to ensure that it is approximately 0.5mm distance away from the chain itself.
 - Check the height of the pad in conjunction with the chain to ensure the pad isn't sitting too low and allowing the chain to drop off.
- There is a "clicking" sound while riding.
 - Check the chain catcher pad to ensure it isn't adjusted too close to the chainring bolts, but still close enough to catch the chain if it were to fall.
- Chain is rubbing on the chain catcher pad.
 - Check the chain catcher pad so it isn't adjusted too closely to the chain itself, it should be approximately 0.5mm distance from the chain.
 - Adjust the height of the tab on single ring pads to ensure room for the chain to raise when back pedaling.
- Chain is rubbing on the chain catcher after installation of the chain catcher clamp.
 - Check the adjustment of the chain catcher clamp and verify that no contact is being made between the clamp and front derailleur.
- Chain catcher pad isn't adjustable.
 - Adjust the position of the chain catcher pad at the slider by loosening the bolt and sliding the chain catcher pad horizontally on the clamp.
 - Check the position of the clamp to ensure the chain catcher pad isn't completely pushed against the slider on the clamp and the pad is parallel to the chain.

Support/Contact:

If problem(s) still persist after troubleshooting, please contact K-Edge Support for further assistance at info@K-Edge.com immediately. Please be sure to include your full name, phone number, K-Edge product purchased, brand and model of bike, crankset with ring sizes, front derailleur, cassette size (if applicable), rear derailleur (if applicable) and a brief description of your problem.